



**SALPIX LIMITED**  
YOUR TRUSTED COMPANY

# COMPANY PROFILE

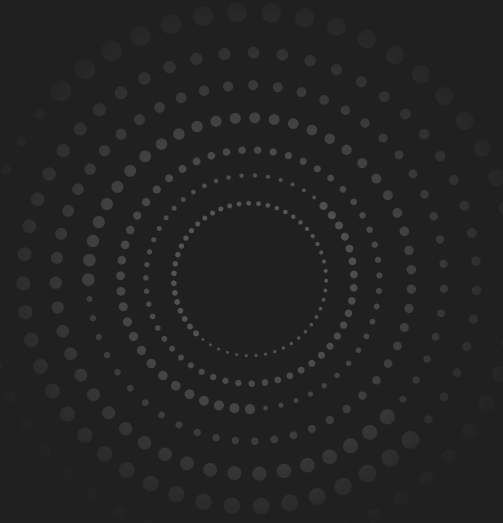
**YOUR**  
TRUSTED COMPANY



# SALPIX EACIA) LIMITED



Empowering Innovation



[www.salpixlimited.co.ke](http://www.salpixlimited.co.ke)



# About Us

---

# 01

**Salpix (EA) Limited** are dedicated to providing comprehensive insurance solutions and exceptional services tailored to meet your needs in Kenya and globally.

## Our Mission

our mission is to protect what matters most to you. We strive to offer reliable insurance products, including general and medical insurance, as well as long-term life insurance options. Our goal is to provide peace of mind through financial security and support.

## Who We Are

With years of experience in the insurance industry, our team of experts is committed to delivering personalized service and expert guidance. We understand that every client is unique, and we take the time to listen and understand your specific requirements.

# Why Us?

---

# 02

- **Expertise and Experience:** Our team consists of seasoned professionals with extensive knowledge in the insurance industry. We have helped numerous clients navigate their insurance needs, ensuring they make informed decisions.
- **Comprehensive Coverage:** We offer a wide range of insurance products tailored to various situations—whether you need protection for personal property, health coverage, or long-term life insurance. Our diverse offerings ensure that you find the right fit for your specific requirements.
- **Tailored Solutions:** We believe that one size does not fit all. Our approach involves understanding your unique situation, allowing us to craft customized insurance plans that align with your goals. We take the time to assess your needs and offer personalized recommendations.



# Our Services

---

# 03

- **General Insurance:** We offer a comprehensive range of general insurance products to protect your property and assets from various risks, including fire, theft, and natural disasters. Our policies are designed to provide peace of mind, whether for personal or commercial properties.
- **Medical Insurance:** Our medical insurance plans cater to your healthcare needs, covering a wide array of services from routine check-ups to emergency treatments. We ensure you have access to quality healthcare when you need it most, with flexible options to fit your budget.



■ **Life Insurance:** Our long-term life insurance options provide financial protection for your loved ones in the event of your passing. We offer various plans, including term and whole life insurance, allowing you to choose the coverage that best suits your family's future needs.

■ **Auto Insurance:** Our auto insurance policies provide comprehensive coverage for vehicles, including protection against accidents, theft, and liability. We offer customizable plans to meet your driving needs, ensuring you stay safe on the road.

■ **General Supplies:** We partner with trusted suppliers to offer a wide range of general supplies, including office materials, promotional items, and heat transfer products. Our goal is to provide high-quality goods that meet your business needs, enhancing your operations and branding efforts.

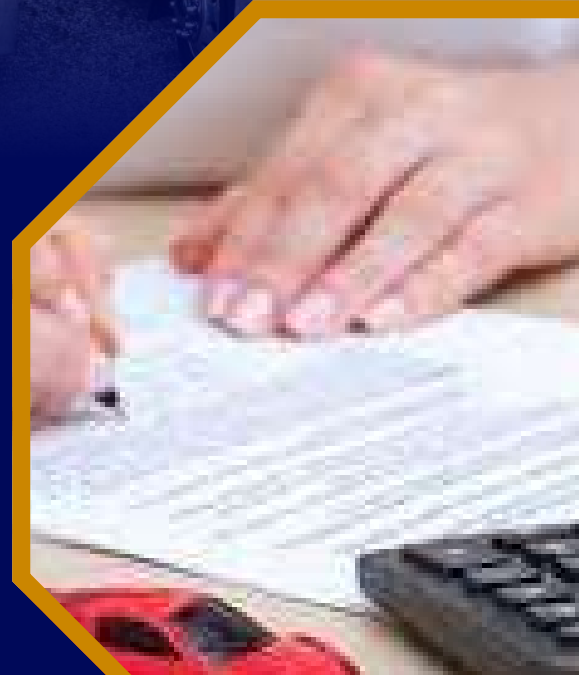
- **Muslim Insurance:** Salpix IA Limited, we offer a range of Islamic insurance (Takaful) services designed to meet the needs of the Muslim community:
- **Engineering Insurance:** We specialize in tailored engineering insurance solutions designed for the construction and engineering sectors in Kenya and other countries supported.
- **Branding:** We provide comprehensive branding solutions, including logo design, brand strategy development, and marketing collateral creation. Our team ensures your brand identity stands out and resonates with your target audience, enhancing recognition and loyalty. We focus on crafting unique visual elements and messaging that reflect your values and mission, helping you build a strong presence in the market.

# GENERAL MOTOR VEHICLE INSURANCE

General motor vehicle insurance offers essential protection for vehicle owners against accidents, theft, and damages. It includes liability coverage for damages to others and options for collision and comprehensive coverage for your own vehicle. Our tailored policies ensure you have peace of mind on the road.

## OUR SERVICE

- Liability Coverage
- Collision Coverage
- Comprehensive Coverage
- Flexibility of Truck Options





No. **PVT-QQ10KWMJ**

# **CERTIFICATE OF INCORPORATION**

I hereby **CERTIFY** that,

## **SALPIX EA(IA) LIMITED**

a **PRIVATE LIMITED COMPANY** is on this date 24 June, 2025 Incorporated under the Companies Act, 2015.



A handwritten signature in blue ink, positioned above a dotted line.

**Registrar Of Companies**

This is a system generated certificate

**START**

# YOUR LIFE INSURANCE

Secure your family's future with the right life insurance plan, because peace of mind is priceless.



Covers  
Expenses



Protects  
your  
legacy



Secures  
your kids  
future



Builds  
financial  
security

**Contact Us:**



[www.salpixlimited.co.ke](http://www.salpixlimited.co.ke)



+254 726 892 080

# Muslim Insurances

Why Rely On Our Service's ?

**Salpix IA Limited specializes in Islamic insurance (Takaful), offering Shariah-compliant solutions for families and businesses. Our expert team ensures ethical coverage and peace of mind for the Muslim community.**

ISLAMIC  
INSURANCE  
(TAKAFUL)

**WE ARE TRUSTED COMPANY**

**WE ARE MADE FOR YOU**

The logo for Salpix Limited features a stylized blue and green wave or leaf shape above the text "SALPIX LIMITED" in green, with "YOUR TRUSTED COMPANY" in smaller green letters below it.  
**SALPIX LIMITED**  
YOUR TRUSTED COMPANY

## **ISLAMIC INSURANCE SOLUTIONS**


At Salpix IA Limited, we provide tailored Islamic insurance (Takaful) solutions that comply with Shariah principles. Our offerings include family Takaful, which provides financial protection for families, ensuring peace of mind in times of need.

## **PROFESSIONAL SUPPORT**

We also offer Takaful for business and property, safeguarding against risks while adhering to Islamic values. Our expert team is dedicated to guiding clients through the unique aspects of Islamic insurance.

## **COMPREHENSIVE COVERAGE**

Additionally, we provide health Takaful, covering medical expenses in line with Shariah principles. With Salpix IA Limited, you gain a trusted partner committed to serving the Muslim community with ethical insurance solutions.



# ENGINEERING INSURANCE

**At Salpix IA Limited we provide tailored engineering insurance solutions, including contractor's all-risk and professional indemnity coverage, ensuring your projects are protected with expert support.**



ENGINEERING  
INSURANCE

**Contractor's All-Risk Insurance**



**Professional Indemnity Insurance**



**Equipment Breakdown Insurance**



**Environmental Liability Insurances**



## **ENGINEERING INSURANCE SOLUTIONS**

Salpix IA Limited offers tailored engineering insurance, including contractor's all-risk insurance to protect against property damage and third-party claims during construction.

## **PROFESSIONAL SUPPORT**

We provide professional indemnity insurance to shield engineering professionals from negligence claims. Our expert team ensures clients have the right coverage to focus on their projects.

## **COMPREHENSIVE COVERAGE**

We also offer equipment breakdown insurance for essential machinery and environmental liability insurance for claims related to environmental damage, making us a trusted partner in your projects.

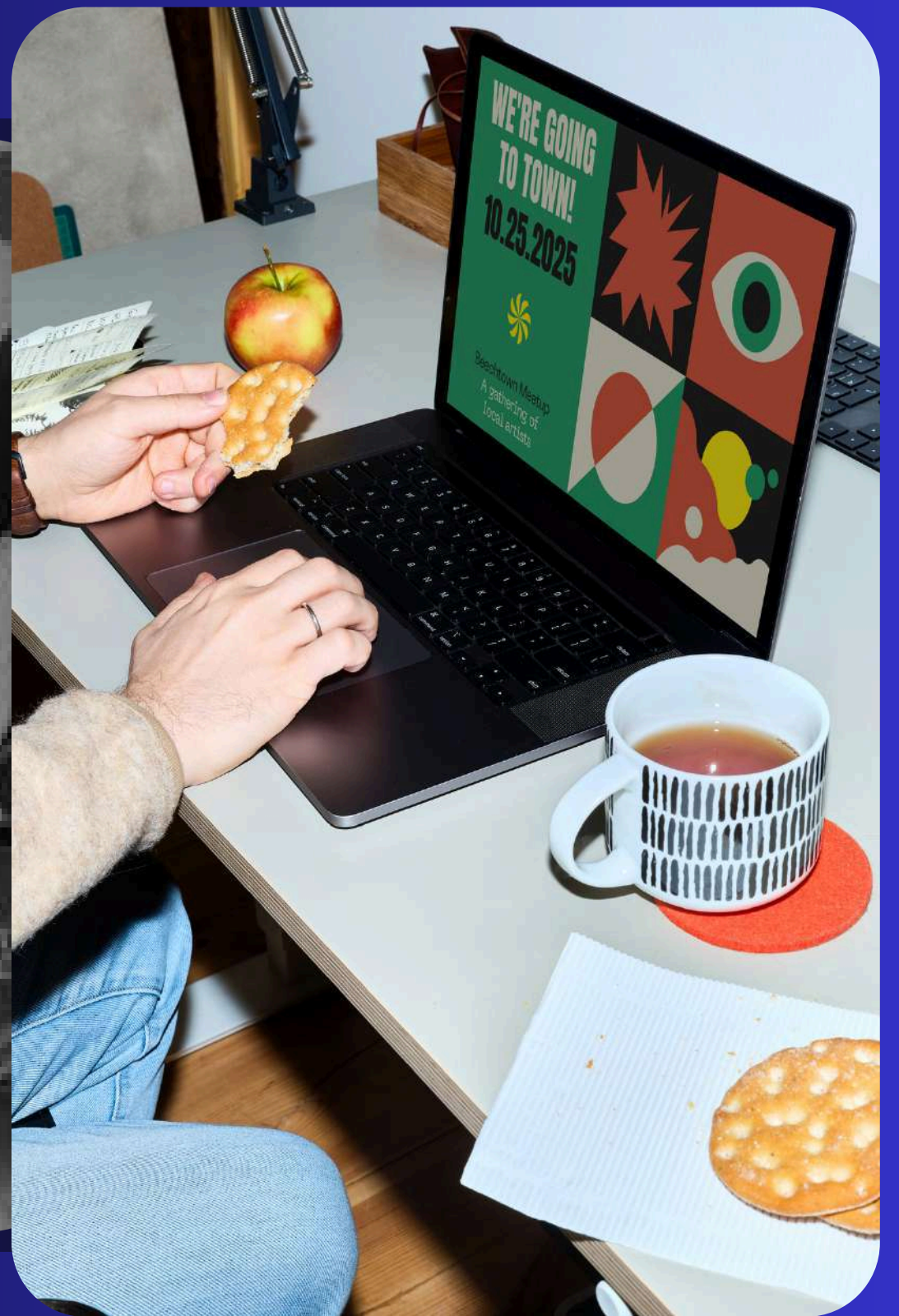


**SALPIX LIMITED**  
YOUR TRUSTED COMPANY

# Crafting Brands That Connect.



We turn ideas into visuals—crafting names, logos, and designs that speak clearly and stay true



01

## Brand Strategy

Defining your brand's vision, positioning, and voice.

02

## Items' & Product's

Building your presence across delivery logo brands and crafting stickers

03

## Logo & Identity Design

Crafting visuals that express your brand personality.



**Our company specializes in providing comprehensive medical insurance services, tailored to meet the diverse needs of individuals and families. We offer a range of plans that ensure access to quality healthcare, including preventive care, specialist consultations, and emergency services. Our dedicated team is committed to exceptional customer support and guidance.**

## **RELATED SERVICES**

- **Individual Health Plans:** Customized insurance plans for individuals, covering essential health services.
- **Family Health Insurance:** Comprehensive coverage options for families, ensuring all members have access to necessary medical care.
- **Preventive Care Services:** Coverage for routine check-ups, vaccinations, and screenings to promote health and prevent illnesses.
- **Specialist Consultations:** Access to a network of specialists for diagnosis and treatment of specific health conditions.
- **Emergency Services Coverage:** Financial protection for unexpected medical emergencies, including hospital visits and urgent care.
- **Prescription Drug Coverage:** Assistance with the cost of medications, including a list of covered drugs and pharmacies.
- **Telehealth Services:** Virtual consultations with healthcare providers, allowing for convenient access to medical advice and treatment from home.

SALPIX EA(IA) LIMITED

# OFFICE STATIONERY



## TONERS

Toners are vital for laser printers, ensuring high-quality printing with crisp text and images. Reliable toner cartridges help maintain productivity by minimizing downtime and ensuring that documents are produced efficiently and professionally.

**WORTHY**



## PRINTING ITEMS

This category includes various materials such as brochures, flyers, and business cards. High-quality printing items enhance branding and communication, making them crucial for marketing and outreach efforts within the company.

**TRUSTED**



## BOOKS

Essential for reference and learning, books in an office can range from industry-specific manuals to general knowledge texts. They serve as valuable resources for employees, promoting continuous learning and professional development.

**PURE**



P.O. Box 208-00208 - NGONG HILLS KENYA

# SALPIX EACIAD LIMITED

Join us in shaping the future



+254-726-892-080



[www.salpixlimited.co.ke](http://www.salpixlimited.co.ke)



[info@salpixlimited.co.ke](mailto:info@salpixlimited.co.ke)





No. **PVT-QQ10KWMJ**

# **CERTIFICATE OF INCORPORATION**

I hereby **CERTIFY** that,

## **SALPIX EA(IA) LIMITED**

a **PRIVATE LIMITED COMPANY** is on this date 24 June, 2025 Incorporated under the Companies Act, 2015.



A handwritten signature in blue ink, followed by a dotted line indicating the signature area.

**Registrar Of Companies**

This is a system generated certificate



BUSINESS REGISTRATION SERVICE  
P. O. BOX 30031  
NAIROBI  
TUE, 24 JUNE, 2025

To  
The Director(s)  
SALPIX EA(IA) LIMITED  
P.O. Box 00208  
00100 - 4467

**THE COMPANIES ACT, 2015**  
[SECTION 249 OF THE COMPANIES ACT, 2015]

Records relating to the below company held by the Companies Registry as at **Tue, 24 June, 2025**

COMPANY	SALPIX EA(IA) LIMITED
TYPE OF COMPANY	PRIVATE LIMITED COMPANY
COMPANY NUMBER	PVT-QQ10KWMJ
NOMINAL SHARE CAPITAL	1000000
NUMBER AND TYPE OF SHARES (VALUE PER SHARE)	1000 ORDINARY SHARES OF KES. 1000
DATE OF REGISTRATION	TUE, 24 JUNE, 2025
REGISTERED OFFICE	TELEPHONE: +254723564418, EMAIL: SALPIXLTD@GMAIL.COM COUNTY: KAJIADO, DISTRICT:KAJIADO NORTH DISTRICT, LOCALITY: ONGATA RONGAI STREET: NGONG ROAD, BUILDING: OROK PLAZA
POSTAL ADDRESS	P.O BOX 00208, 00100 - G.P.O NAIROBI
ENCUMBRANCES	

Name of Directors and Shareholders of the above company with their particular are as follows

NAME	DESCRIPTION	ADDRESS	NATIONALITY	SHARES
ISAAC WAMBAZU MALUKI	DIRECTOR_SHAREHOLDER	P.O. BOX 208 00208 - NGONG HILLS	KENYA	1000- ORDINARY

Yours Faithfully,  
REGISTRAR OF COMPANIES



REF NO: PVT-QQ10KWMJ

DISCLAIMER: THIS IS A SYSTEM GENERATED CERTIFICATE AND DOES NOT REQUIRE A SIGNATURE

Certificate Date : 24/06/2025

Personal Identification Number

P052443314P

This is to certify that taxpayer shown herein has been registered with Kenya Revenue Authority

**Taxpayer Information**

<b>Taxpayer Name</b>	SALPIX EA(IA) LIMITED
<b>Email Address</b>	salpixltd@gmail.com

**Registered Address**

<b>L.R. Number</b> : NA	<b>Building</b> : OROK PLAZA
<b>Street/Road</b> : NGONG ROAD	<b>City/Town</b> : NA
<b>County</b> : Kajiado	<b>District</b> : kajiado North District
<b>Tax Area</b> : Ongata Rongai	<b>Station</b> : KAJIADO
<b>P. O. Box</b> : 00208	<b>Postal Code</b> : 00100

**Tax Obligation(s) Registration**

<b>Sr.</b>	<b>Tax Obligation(s)</b>	<b>Effective Date</b>
1	Income Tax - Company	24/06/2025

The above PIN must appear on all your tax invoices and correspondences with Kenya Revenue Authority. Your accounting end month is December unless a change has been approved by the Commissioner-Domestic Taxes Department. The status of Tax Obligation(s) with 'Dormant' status will automatically change to 'Active' on date mentioned in "Effective Till Date" or any transaction done during the period. This certificate shall remain in force till further updated.

05 25 2270



537393205

**REGISTRATION:**  
IRA/05/50085/2025

\* E-COPY LICENCE

**EXPIRES ON:**  
31-December-2025

**Insurance Regulatory Authority**  
**REGISTRATION AS AN AGENT**

**Registration is granted to:**

**SALPIX EA(IA) LTD**  
P.O BOX - NAIROBI

(Name)  
(Address)

to operate as an agent in Kenya, subject to the provision of the Insurance Act, 1984 and the conditions endorsed hereon for a period of twelve months ending 31-December-2025 .

**CONDITIONS:**

**CLASS OF BUSINESS:** General & Long-Term Insurance Business

**Licensed on:** 07-Jul-2025  
**Printed on:** 08-Jul-2025  
P.O. Box 43505 - 00100 Nairobi, Kenya



A handwritten signature in black ink, appearing to read "G. Kiptum".

-----  
GODFREY K. KIPTUM  
Commissioner of Insurance

IRA/05/50085/2025